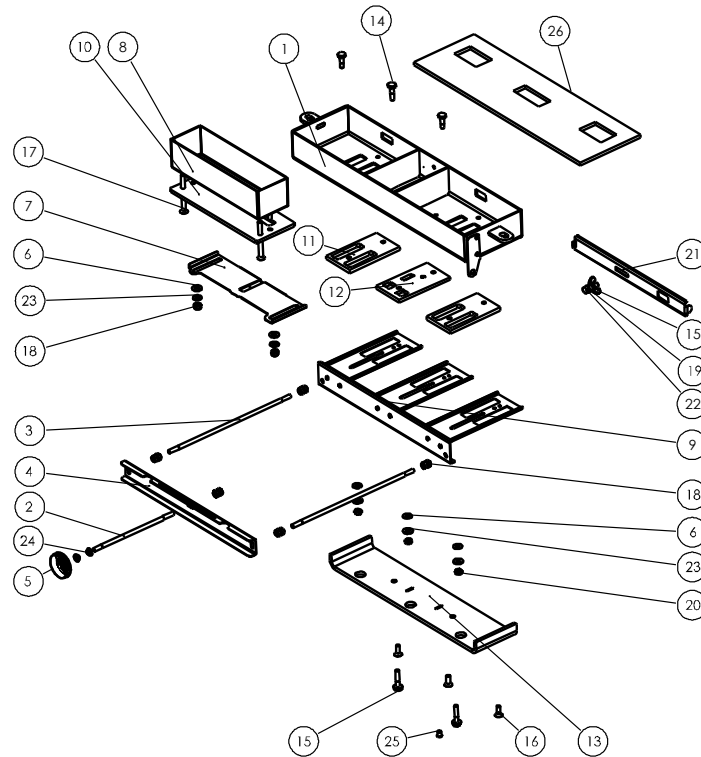




Issue D



Item	Part No.	Description	Ex.Vat.	Inc.Vat.	Item	Part No.	Description	Ex.Vat.	Inc.Vat.
1	010/ES15/05	Mounting Box	26.50	31.80	14	008/FFS062	M6 x 25 Hex Hd	0.10	0.12
2	004/ES15/02	Connecting Rod	12.50	15.00	15	008/FFS061	M6 x 30 Hex Hd	0.10	0.12
3	004/ES15/03	Air Flow Link Rod	15.10	18.12	16	008/FFS077	M6x10 CSK Screw	0.10	0.12
4	004/ES15/04	Front Connector	17.70	21.24	17	008/FFS070	M6x65 CSK Screw	0.25	0.30
5	008/ES15/11	Air Control Knob	8.70	10.44	18	008/FFN004	M6 Nut	0.10	0.12
6	008/ES15/16	PTFE Washer	1.60	1.92	19	008/FFN007	M6 Wing Nut	0.30	0.36
7	004/ES15/21	Slide Front	17.70	21.24	20	008/FFN014	M6 Nyloc Nut	0.30	0.36
8	004/ES15/22	Front Air Box	30.00	36.00	21	004/CY21	Air Bypass Slider	17.60	21.12
9	004/ES15/24	Air Slide	15.10	18.12	22	008/FFM022	M6 Grip Washer	0.30	0.36
10	008/ES15/26	PTFE Slide Strip	15.10	18.12	23	008/FFW002	M6 Plain Washer	0.10	0.12
11	008/ES15/27	PTFE Slider	15.10	18.12	24	008/FFM040	Bearing	1.60	1.92
12	008/ES15/29	PTFE Slider	15.10	18.12	25	008/ES36/01	Brass Ball Catch	3.70	4.44
13	010/ES15/18	Airbox Guard	12.50	15.00	26	008/ES15/12	Rear Airbox Gasket	23.50	28.20

Please specify colour when ordering
 Prices are shown in pounds sterling with vat at 20%
 They are correct at the date shown but may be subject to change without notice. E. & O.E
 These prices are subject to a carriage charge.

To obtain spare parts please contact your local stockist giving Model, Part No. and Description. In case of difficulty contact the manufacturer at the address shown.
 This drawing is for identification purposes only.

